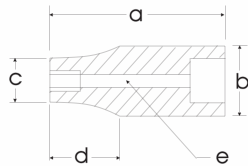
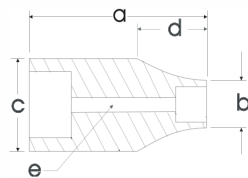


1" DRIVE SOCKETS & ATTACHMENTS

6 Point Standard Length - Impact Black Industrial Finish



STYLE I



STYLE II

	Hex Size	6 Point Part No.	Overall Length in. a	Drive End in. b	Hex End in. c	Taper Length in. d	Bolt Clearance in. e
Style I	3/4"	7-624	2.28	2.01	1.42	0.91	0.53
	13/16"	7-626	2.28	2.01	1.50	0.91	0.59
	7/8"	7-628	2.28	2.01	1.54	0.91	0.59
	15/16"	7-630	2.28	2.01	1.57	0.91	0.66
	1"	7-632	2.28	2.01	1.65	0.91	0.66
	1 1/16"	7-634	2.28	2.01	1.73	0.91	0.69
	1 1/8"	7-636	2.28	2.01	1.81	0.91	0.78
	1 3/16"	7-638	2.36	2.01	1.89	0.98	0.80
	1 1/4"	7-640	2.36	2.01	2.01	—	0.81
	1 5/16"	7-642	2.44	2.05	2.09	—	0.94
1 3/8"	7-644	2.44	2.05	2.13	—	0.94	
1 7/16"	7-646	2.44	2.05	2.20	—	1.00	
1 1/2"	7-648	2.44	2.05	2.28	—	1.06	
1 9/16"	7-650	2.44	2.05	2.36	—	1.06	
1 5/8"	7-652	2.44	2.05	2.42	—	1.13	
1 11/16"	7-654	2.52	2.05	2.56	—	1.19	
1 3/4"	7-656	2.52	2.28	2.60	—	1.19	
1 13/16"	7-658	2.52	2.28	2.68	—	1.25	
1 7/8"	7-660	2.60	2.28	2.76	—	1.31	
1 15/16"	7-662	2.68	2.28	2.83	—	1.37	
2"	7-664	2.76	2.28	2.91	—	1.37	
2 1/16"	7-666	2.76	2.28	2.95	—	1.44	
2 1/8"	7-668	2.76	2.28	3.07	—	1.50	
2 3/16"	7-670	2.83	2.44	3.15	—	1.50	
2 1/4"	7-672	2.95	2.44	3.31	—	1.56	
2 5/16"	7-674	2.95	2.44	3.39	—	1.56	
2 3/8"	7-676	3.07	2.44	3.43	—	1.56	
2 7/16"	7-678	3.07	2.44	3.50	—	1.69	
2 1/2"	7-680	3.15	2.44	3.58	—	1.75	
2 9/16"	7-682	3.15	2.44	3.66	—	1.75	
2 5/8"	7-684	3.23	2.44	3.74	—	1.81	
2 11/16"	7-686	3.23	2.44	3.82	—	1.87	
2 3/4"	7-688	3.35	2.44	3.86	—	1.87	
2 13/16"	7-690	3.43	2.44	3.94	—	1.94	
2 7/8"	7-692	3.43	2.44	4.02	—	1.94	
2 15/16"	7-694	3.74	3.39	4.09	—	1.94	
3"	7-696	3.86	3.39	4.17	—	2.22	
3 1/8"	7-6100	3.94	3.39	4.29	—	2.22	
3 1/4"	7-6104	3.94	3.39	4.45	—	2.31	
3 3/8"	7-6108	3.94	3.39	4.53	—	2.37	
3 1/2"	7-6112	4.13	3.39	4.92	—	2.37	
3 5/8"	7-6116	4.13	3.39	5.00	—	2.56	
3 3/4"	7-6120	4.13	3.39	5.12	—	3.52	
3 7/8"	7-6124	4.13	3.74	5.35	—	2.63	
4"	7-6128	4.13	3.74	5.51	—	2.85	
4 1/8"	7-6132	4.13	3.74	5.63	—	2.85	
4 1/4"	7-6136	4.13	3.74	5.75	—	2.85	
4 1/2"	7-6144	4.13	3.74	5.98	—	3.09	

Federal Spec. U.S. GGG-W-660 ANSI Spec. B1072-1975